

SINGLE PLY - TPO & PVC

FLASHWRAP® - SPLIT BOOTS



Cylindrical

1", 2", 3", 4", 5", 6"
(Made to actual size)



Square/Rectangle

2"x2", 4"x4"
(Standard corner radius is 1/8")



Conical

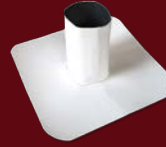
Bantam .5-1 (1/2"-1")
Welter 1-3 (1"-3")
Middle 3-5 (3"-5")
Cruiser 5-7 (5"-7")
Super 7-9 (7"-9")

FLASHJACK™ - CLOSED BOOTS



Cylindrical

Made to Order



Square/Rectangle

Made to Order



Conical

Bantam .5-1 (1/2"-1")
Welter 1-3 (1"-3")
Middle 3-5 (3"-5")
Cruiser 5-7 (5"-7")
Super 7-9 (7"-9")



Molded Pipe Seal

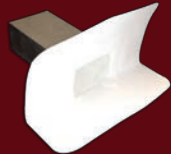
1" - 6"

FLASHDRAIN™ - DRAINS



Retrofit

2", 3", 4", 5", 6"



Scupper

4"Wx4"Hx12"D
6"Wx4"Hx12"D



Drain Boot

2", 3"
(Membrane only)



Drop Outlet

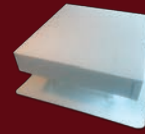
2", 3"
(Designed for external drainage)

FLASHVENT™ - VENT FLASHINGS



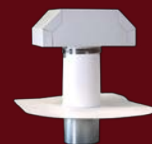
Breather

4"



Gravity

12"x12", 18"x18"
24"x24"



EasyFlapper™

4", 6", 8"



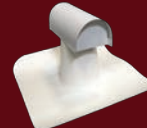
FlashCap®

1 1/2", 2", 3", 4"



Square Top

8"



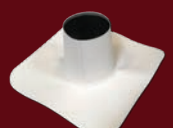
T-Top

4", 6", 8"
4"x12" Box



Assembly

4", 4" Oval,
6", 8", 10", 12"



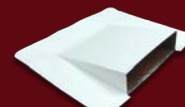
Sub Base & Boot

4", 4" Oval,
6", 8", 10", 12"



Louver

14"x18", 12"x12",
14"x12"



Wall

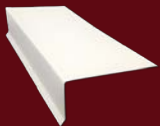
12", 16", 24"
(for 90° applications)



Eyebrow

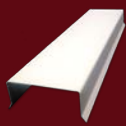
18", 24"
(for 45° - 90° slopes)

FLASHEDGE™ - COATED METAL



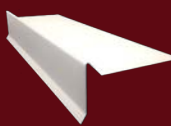
Drip Edge

2"x4"x10'
3"x3"x10'



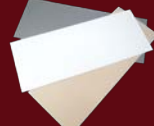
Cap Metal

Made to Order



Gravel Stop

2"x4"x10'
3"x3"x10'



Flat Sheets

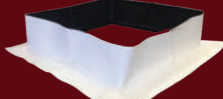
4'x10'

FLASHACCESSORY™ - ACCESSORIES



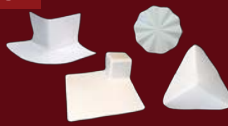
Sealant Pockets

4"x4", 6"x6", 8"x8"
6"x6"-12" (Molded)



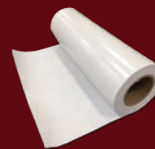
Curbs

Made to Order



Corners

6" Inside, 6" Outside
Fluted Outside
Molded Inside/Outside



Flash Membrane

24"x50'



T-Joint Covers

4 1/2"



Roof Stanchion

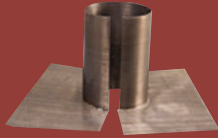
16" x 16"

**Get Off the Roof Sooner • Reduce Your Installed Costs • 90% of Orders Ship in 1-3 Days
7 Locations Nationwide • Standard & Custom • NDL & Non-NDL Jobs**

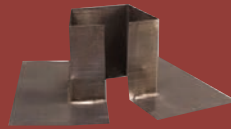


LEAD - BUR & RESIDENTIAL

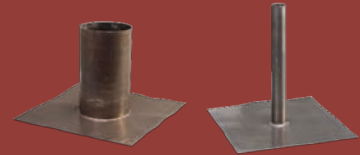
LEAD BOOTS



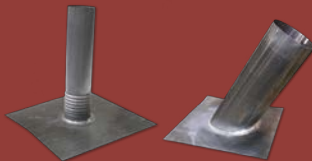
Round Split
1" to 6"



Square Split
2"x2", 4"x4", 6"x6"



Closed
½" to 8"



Pro Series
Pipe Sizes: 1½" to 6"
Base Sizes: 10"x10" to 18"x18"
Riser Height: 12" to 16"



Standard Series
Pipe Sizes: 1½" to 4"
Base Sizes: 12"x9", 12"x12"
Riser Height: 12"

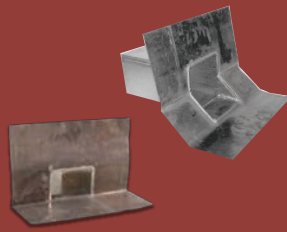


Econo Series
Pipe Sizes: 1½" to 4"
Base Sizes: 8"x10", 10"x12"
Riser Height: 10"

LEAD DRAINS



Retrofit
2", 3", 4", 5", 6"



Scuppers
Made to Order

LEAD VENTS



EasyFlapper™
4", 6", 8"



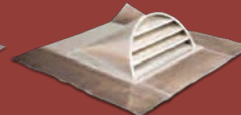
Assembly
4", 6", 8", 10", 12"



FlashCap®
1½", 2", 3", 4"



T-Top
4", 6", 8"



Eyebrow
50si, 9" skirt

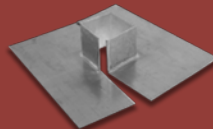


Exhaust
4", 6", 8", 10", 12"

LEAD ACCESSORIES



Sheet Lead
30"x30", 36"x36" and rolls



Pitch Pocket
Made to Order



Solder
¼ lb., ½ lb., 1 lb. bar

**Get Off the Roof Sooner • Reduce Your Installed Costs • 90% of Orders Ship in 1-3 Days
7 Locations Nationwide • Standard & Custom**

