

# FlashVent™ GRAVITY VENT

PVC Low Slope Systems

## OVERVIEW

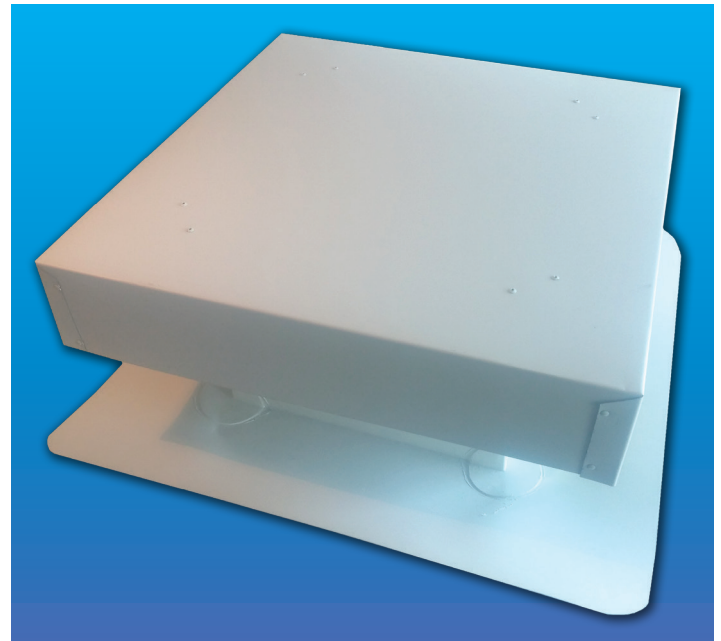
FlashCo's Gravity Vents are prefabricated vents which allow free flowing air between the vented area and exterior of the structure. This allows heat or contaminant air to exit the vented space and aid in avoiding exhaust and heat buildup. Gravity vents are placed on the roof deck and easily installed by lifting up the membrane flange and fastening the sub base to the deck.

FlashCo Gravity Vents are constructed with a coated metal base flashing, a reinforced membrane flange, PVDF painted hood, 26 Ga. galvanized baffles and 1/8"x1/8" galvanized mesh screen (meets CA Fire Code). The coated metal and membrane are made to be compatible with the roofing system. Baffles are used to help prevent wind driven rain and the wire mesh is incorporated on top of the sub base to keep insects out.

## INSTALLATION

FlashCo's FlashVent Gravity Vents shall be installed in accordance with the recommendations and specifications of the roofing material manufacturer.

1. Prepare all welding surfaces by cleaning with PVC membrane cleaner.
2. Secure vent sub base to roof deck over appropriate sized hole with proper fasteners.
3. Heat weld membrane flange to deck membrane.
4. After the flashing has cooled, probe welds to verify a secure bond.



## FEATURES AND BENEFITS

- Eliminates time-consuming field fabrication
- Blocks wind driven rain
- Allows heat and contaminated air to exit the vented space

## SAVING THE CONTRACTOR TIME

- **FlashCo's Brand Promise is Speed:** shipping 90% of orders within 3 days.
- 24/7/365 Online Contractor Portal and additional time-saving tools
- Most orders delivered on FlashCo's own delivery trucks
- Get off the roof sooner

## SIZES, PACKAGING, MATERIALS & COLORS

Size	Qty/Box	Material	Colors
12"x12"	Pallet	60 mil Reinforced PVC	White, Gray, Tan
18"x18"	Pallet	60 mil Reinforced PVC	White, Gray, Tan
24"x24"	Pallet	60 mil Reinforced PVC	White, Gray, Tan

