

# PAINTED PVDF COPING

FlashCo's Painted PVDF Coping is used on low-slope roofing systems as perimeter edge metal to prevent moisture intrusion and control the flow of water away from fascia and siding materials. PVDF Coping products are manufactured using 24-gauge, G90 galvanized steel sheet that is painted. The rich and vibrant painted colors are produced with Kynar 500® or Hylar 5000® resins, which provide superior color retention and allow FlashCo to offer non-prorated coating warranties for most applications. FlashCo's Painted PVDF Coping is easy to install, saving contractors time on the roof.

## INSTALLATION INSTRUCTIONS

1. Check to make sure wall is free of debris and all membrane is secured to the wall.
2. Make sure that all metal components have been isolated from ACQ treated lumber with appropriate membrane materials.
3. If using a cleat, install using galvanized steel roofing nails.
4. Place the coping onto the cleat (if used) and secure with galvanized steel roofing nails.
5. Peel all plastic from drip edge and dispose of properly.



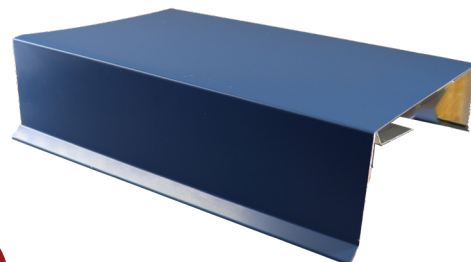
## FEATURES AND BENEFITS

- Manufactured with 24-gauge, G90 galvanized steel
- Made to order and sold in 10' lengths
- Available in 25 rich and vibrant colors
- Most orders are delivered on FlashCo's trucks to prevent damage

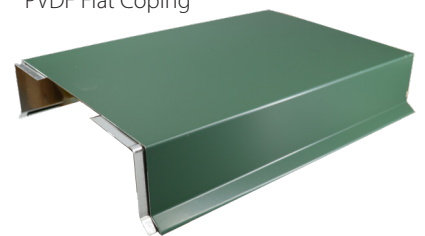
## SAVING THE CONTRACTOR TIME

- **FlashCo's Brand Promise is Speed:** shipping 90% of orders within 3 days.
- 24/7/365 Online Contractor Portal and additional time-saving tools
- Reduces labor time and installed costs

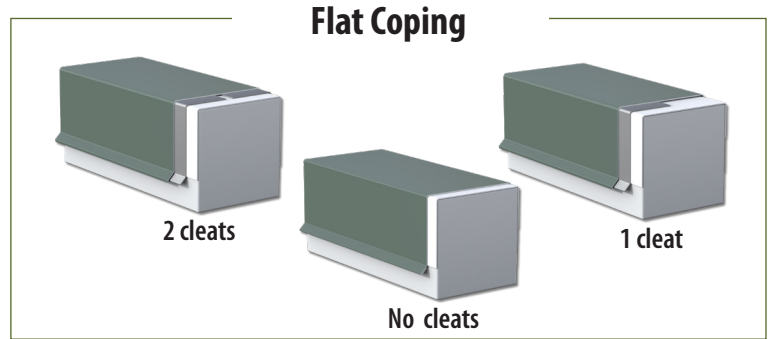
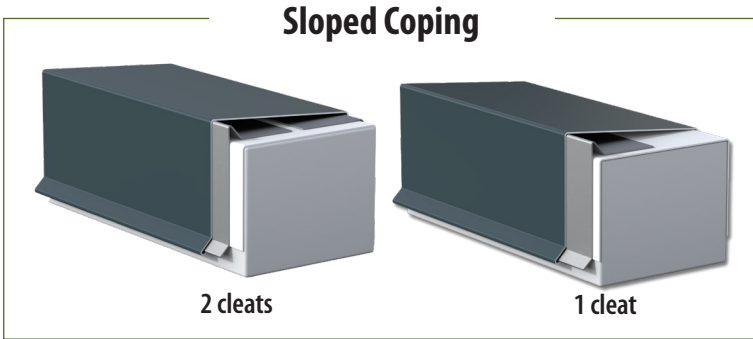
PVDF Sloped Coping



PVDF Flat Coping



PRODUCT OPTIONS

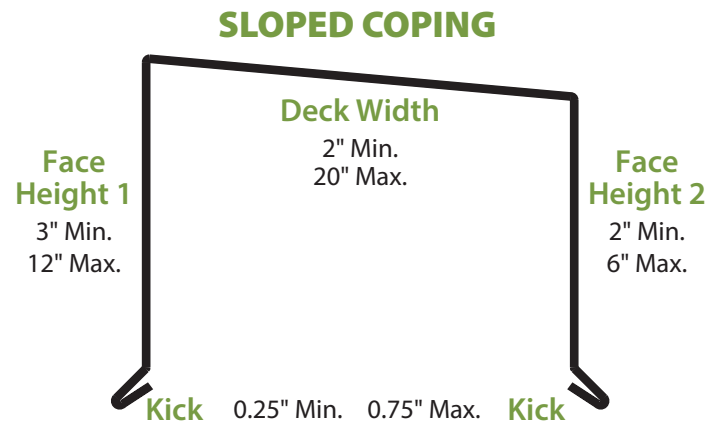


FAST SHIP COLORS

FlashCo offers 25 rich and vibrant painted colors produced with Kynar 500® or Hylar 5000® resins. Please request a color card to see the full set of options available. Fast ship colors are available for quick delivery.



SIZES



CLEATS (OPTIONAL)

Sized to match coping

