

# FlashDrain™ SCUPPER

TPO Low Slope Systems

## OVERVIEW

FlashCo's FlashDrain Scuppers are Factory Certified prefabricated lateral drains, allowing free flowing water, to exit the roof through a parapet or dividing wall. The scupper drain is located at the point where roof deck meets the wall and is easily installed by lifting the 6" membrane flange and fastening the 3" metal tabs to the wall sheeting and substrate. The membrane flange is then heat welded to the field membrane preventing water from infiltrating the roofing system.

## CONSTRUCTION

FlashCo's commercial grade FlashDrain Scuppers are constructed with a 24 gauge coated metal throat and tabs, as well as a .060" reinforced membrane skirt. FlashCo's corner patches ensure added protection at the most critical points. The prefabricated membrane flange is made to be compatible with the roofing system.

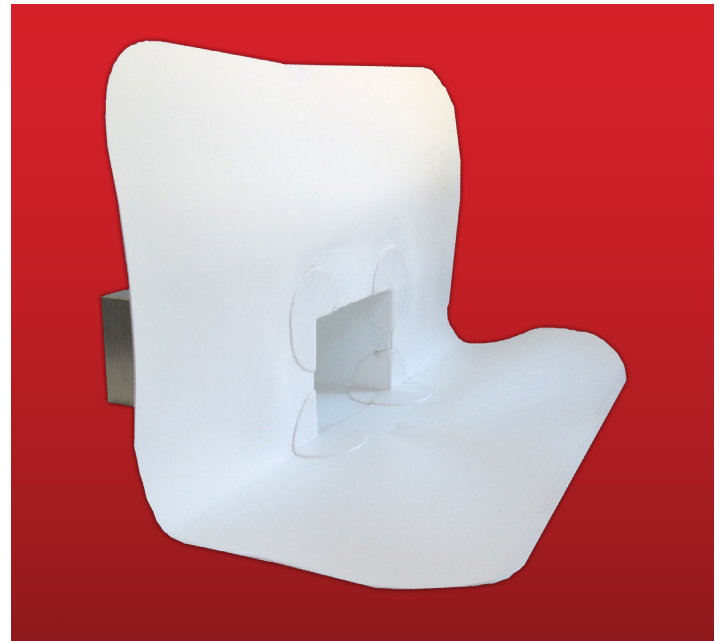
## APPLICATION

FlashCo's FlashDrain scuppers are available to fit overflow applications, right and left corners, and canted applications. *Custom sizes and colors are also available.*

## INSTALLATION

FlashDrains shall be installed in accordance with the recommendations and specifications of the roofing material manufacturer.

1. Insert appropriately sized scupper into hole in perimeter wall.
2. Lift membrane flange and fasten to deck and wall through coated metal flange.
3. Heat weld membrane flange to field and wall membrane.
4. Apply cut edge sealant, TPO only (provided by others) around edge of flange.



## FEATURES AND BENEFITS

- Prefabricated flange saves up to 70% of labor
- Corner patches provide added protection at critical points
- Available in custom sizes and colors
- Available for NDL and Discretionary Jobs

## SAVING THE CONTRACTOR TIME

- FlashCo strives to ship 90% of orders within 1-3 days after purchase orders are placed
- All major membrane manufacturer brands in stock in all five FlashCo plant locations
- Get off the roof sooner
- Reduce installed costs

## STANDARD SIZES

Opening	Depth	Flange
4"x4"	12"	16"x16"
6"x4"	12"	16"x18"

*Also available in custom sizes & colors*

## MATERIAL PROPERTIES & CHARACTERISTICS

Description	Material	Thickness	Color
Reinforced Membrane*	TPO/PVC	.060" (60 mil)	White, Gray, Tan, Custom
Throat & Tabs	Coated Metal	24 gauge Steel .059"	White, Gray, Tan, Custom

*\* Non-reinforced membrane available*

