

Name: _____
 Company: _____
 Cellular: _____
 Email: _____
 Distributor: _____

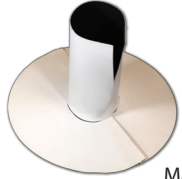
Job Date: _____
 Job Reference: _____
 Roofing System: TPO PVC NDL Job: Yes No
 If NDL, Rep Name: _____
 Color: White Tan Gray Slate Gray Dark Bronze

Note: For multiple sizes and/or colors use additional quote forms. Want to fill out faster? Go online FlashCo.com/Edge-FlashForm

FLASHWRAP® - SPLIT BOOTS

Cylindrical Split Boot

Qty: _____



Size

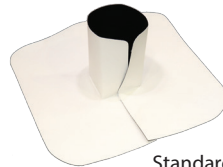
- 1" 2" 3"
 4" 5" 6"

Hose Clamp: Yes No

Made to actual size

Square/Rectangle Split Boot

Qty: _____



Size

- 2"x2"
 4"x4"

Standard corner radius is 1/8"

Conical Split Boot

Qty: _____



Size

- Bantam .5-1 (1/2"-1")
 Welter 1-3 (1"-3")
 Middle 3-5 (3"-5")
 Cruiser 5-7 (5"-7")
 Super 7-9 (7"-9")

Hose Clamp: Yes No

FLASHJACK™ - CLOSED BOOTS

Conical Boot

Qty: _____



Size

- Bantam .5-1 (1/2"-1")
 Welter 1-3 (1"-3")
 Middle 3-5 (3"-5")
 Cruiser 5-7 (5"-7")
 Super 7-9 (7"-9")

Hose Clamp: Yes No

Molded Pipe Seal

Qty: _____



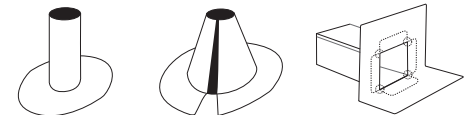
Size

- 6 in 1 Pre-Molded Universal
 (hose clamp included)

Available in white only

For Custom Sizes:

Use Custom Accessories FlashForm, or
 use Online FlashForm (FlashCoMfg.com/Edge-FlashForm)



FLASHDRAIN™ - DRAINS

Retrofit Drain

Qty: _____



Size

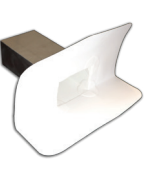
- 2" 3" 4"
 5" 6"

Fluted: Yes No

Target Patch: Yes No

Scupper (Reinforced)

Qty: _____



Size

- 4"W x 4"H x 12"D x 6"F
 6"W x 4"H x 12"D x 6"F
 Throughwall Overflow
 Type: Center Corner

Drain Boot

Qty: _____



Size

- 2" 3"

Membrane only

Drop Outlet

Qty: _____



Size

- 2" 3"

Designed for external drainage

FLASHVENT™ - VENT FLASHINGS

Easy Flapper™

Qty: _____



Size

- 4" 6" 8"

Add Boot: Yes No

Sub Base & Boot/Assembly

Qty: _____



Size

- 4" 4" Oval 6"
 8" 10" 12"
 Boot Assembly

Breather Vent

Qty: _____

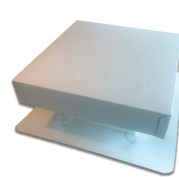


Size

- 4" Round
 8" Square
 One Way
 Two Way

Gravity Vent

Qty: _____



Size

- 12"x12"
 18"x18"
 24"x24"

Louver Vent

Qty: _____



Size

- 14" x 18"
 12" x 12"
 14" x 12"

T-Top & Square Top Vents

Qty: _____



Size

- 4" T-Top
 6" T-Top
 8" T-Top
 8" Square Top
 4"x12" T-Top Box

Eyebrow Vent

Qty: _____



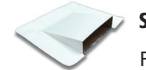
Size

- 18" 24"

For 45° - 90° slopes

Wall Vent

Qty: _____



Size

- 12" 16" 24"

For 90° applications

FlashCap® Vent Boot

Qty: _____



Size

- 1 1/2" 2"
 3" 4"

FLASHACCESSORY™ - ACCESSORIES

Coated Metal

Qty: _____



Size

- 2"x4"x10'
 3"x3"x10'
 4' x 10' Full Sheet

Sealant Pocket

Qty: _____



Pre-Fab Size

- 4"x4" 6"x6" 8"x8"

Molded Size

- 6" x 6"-12"

Corners

Qty: _____



Size

- 6" Inside Corner
 6" Outside Corner
 Fluted Outside
 Molded Inside/Outside

T-Joint Covers

Qty: _____ 100/bag



Size

- 4 1/2" Pre-Fab
 4 1/2" Molded