

Name: \_\_\_\_\_

Job Date: \_\_\_\_\_

Company: \_\_\_\_\_

Job Reference: \_\_\_\_\_

Cellular: \_\_\_\_\_

Roofing System:  TPO  PVC NDL Job:  Yes  No

Email: \_\_\_\_\_

If NDL, Rep Name: \_\_\_\_\_

Contractor: \_\_\_\_\_

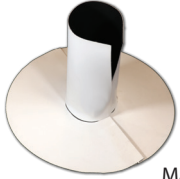
Color:  White  Tan  Gray  Slate Gray  Dark Bronze

**Note: For multiple sizes and/or colors use additional quote forms. Want to fill out faster? Go online FlashCoMfg.com/Distributor-FlashForm**

## FLASHWRAP® - SPLIT BOOTS

### Cylindrical Split Boot

Qty: \_\_\_\_\_



**Size**

1"  2"  3"

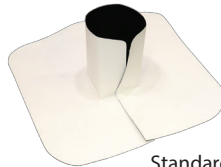
4"  5"  6"

Hose Clamp:  Yes  No

Made to actual size

### Square/Rectangle Split Boot

Qty: \_\_\_\_\_



**Size**

2"x2"

4"x4"

Standard corner radius is 1/8"

### Conical Split Boot

Qty: \_\_\_\_\_



**Size**

Bantam .5-1 (1/2"-1")

Welter 1-3 (1"-3")

Middle 3-5 (3"-5")

Cruiser 5-7 (5"-7")

Super 7-9 (7"-9")

Hose Clamp:  Yes  No

## FLASHJACK™ - CLOSED BOOTS

### Conical Boot

Qty: \_\_\_\_\_



**Size**

Bantam .5-1 (1/2"-1")

Welter 1-3 (1"-3")

Middle 3-5 (3"-5")

Cruiser 5-7 (5"-7")

Super 7-9 (7"-9")

Hose Clamp:  Yes  No

### Molded Pipe Seal

Qty: \_\_\_\_\_



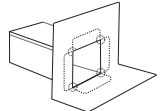
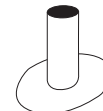
**Size**

6 in 1 Pre-Molded Universal (hose clamp included)

Available in white only

### For Custom Sizes:

Use Custom Accessories FlashForm, or use Online FlashForm (FlashCoMfg.com/Distributor-FlashForm)



## FLASHDRAIN™ - DRAINS

### Retrofit Drain

Qty: \_\_\_\_\_



**Size**

2"  3"  4"

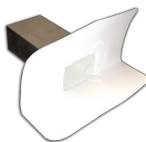
5"  6"

Fluted:  Yes  No

Target Patch:  Yes  No

### Scupper (Reinforced)

Qty: \_\_\_\_\_



**Size**

4"W x 4"H x 12"D x 6"F

6"W x 4"H x 12"D x 6"F

Throughwall  Overflow

Type:  Center  Corner

### Drain Boot

Qty: \_\_\_\_\_



**Size**

2"  3"

Membrane only

### Drop Outlet

Qty: \_\_\_\_\_



**Size**

2"  3"

Designed for external drainage

## FLASHVENT™ - VENT FLASHINGS

### Easy Flapper™

Qty: \_\_\_\_\_



**Size**

4"  6"  8"

Add Boot:  Yes  No

### Sub Base & Boot/Assembly

Qty: \_\_\_\_\_



**Size**

4"  4" Oval  6"

8"  10"  12"

Boot  Assembly

### Breather Vent

Qty: \_\_\_\_\_



**Size**

4" Round

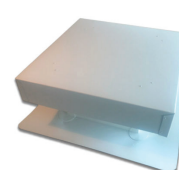
8" Square

One Way

Two Way

### Gravity Vent

Qty: \_\_\_\_\_



**Size**

12"x12"

18"x18"

24"x24"

### Louver Vent

Qty: \_\_\_\_\_



**Size**

14" x 18"

12" x 12"

14" x 12"

### T-Top & Square Top Vents

Qty: \_\_\_\_\_



**Size**

4" T-Top

6" T-Top

8" T-Top

8" Square Top

4"x12" T-Top Box

### Eyebrow Vent

Qty: \_\_\_\_\_

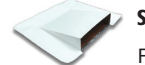


Size  18"  24"

For 45° - 90° slopes

### Wall Vent

Qty: \_\_\_\_\_



Size  12"  16"  24"

For 90° applications

### FlashCap® Vent Boot

Qty: \_\_\_\_\_



**Size**

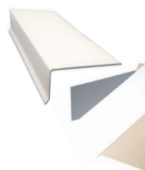
1 1/2"  2"

3"  4"

## FLASHACCESSORY™ - ACCESSORIES

### Coated Metal

Qty: \_\_\_\_\_



**Size**

2"x4"x10'

3"x3"x10'

4' x 10' Full Sheet

### Sealant Pocket

Qty: \_\_\_\_\_



**Pre-Fab Size**

4"x4"  6"x6"  8"x8"

**Molded Size**

6" x 6"-12"

### Corners

Qty: \_\_\_\_\_



**Size**

6" Inside Corner

6" Outside Corner

Fluted Outside

Molded Inside/Outside

### T-Joint Covers

Qty: \_\_\_\_\_ 100/bag



**Size**

4 1/2" Pre-Fab

4 1/2" Molded