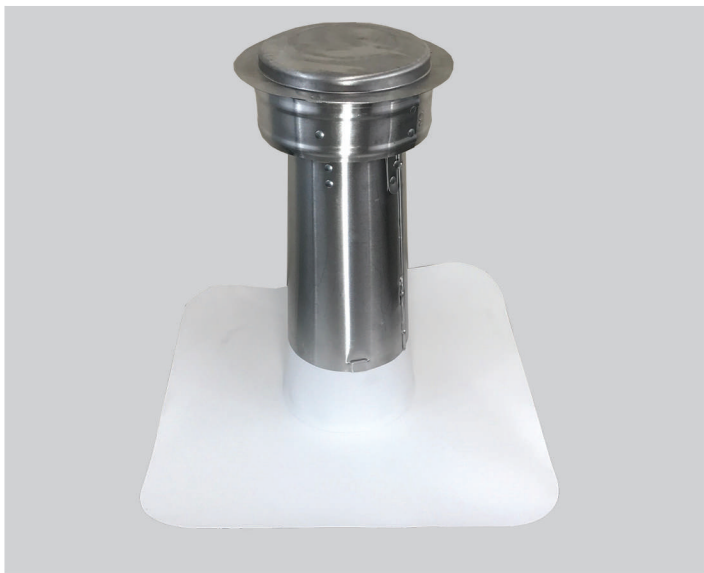


FlashVent™ VENT ASSEMBLY VENT

Single Ply Low Slope Systems



OVERVIEW

FlashCo's Assembly Vents are primarily used for heated exhaust applications. The Assembly Vent has 3 pieces and is assembled in the field. The Assembly vent is located on the roof deck and easily installed by placing the sub base over the penetration and fasten base to deck through metal flange. The prefabricated membrane boot is placed on the sub base. The membrane flange is then heat welded to the deck if TPO/PVC or adhered if EPDM. Lastly the aluminum top, acting as a counter flashing is fastened to the sub base and boot portion of the assembly.

FlashCo's commercial grade Assembly Vents are constructed with a metal sub base, a reinforced membrane boot, and an aluminum top. FlashCo's sub base and boot is 8" high meeting the minimum height requirement for low slope systems. The prefabricated membrane boot is made to be compatible with the roofing system. FlashVents™ are designed for ease of application and require no field fabrication greatly reducing labor cost.

The intended use is for heated exhaust venting natural gas furnaces. Assemblies can be used for other exhaust ventilation such as bathroom and kitchen fans. The aluminum top acts as a counter flashing eliminating the need for a storm collar however some vent pipe extend higher requiring a storm collar and for these applications the top is provided by others. See Sub Base and Boot. Assembly Vents for storm collar applications.

FEATURES AND BENEFITS

- Installs in Minutes
- No Field Fabrication Required
- Storm Collar is Not Required
- Compatible with Single Ply Membrane
- Sub Base Meets Low Slope 8" Minimum Height
- Aluminum Top
- All major brands and Colors Readily Available

FlashVents shall be installed in accordance with the recommendations and specifications of the roofing material manufacturer or architect if NDL job.

1. Secure vent sub base to roof deck over appropriate sized hole with proper fasteners.
2. Heat weld or adhere the base flange to the deck membrane.
3. For TPO applications apply cut edge sealant.

Sizing, Characteristics & Box Quantity

Size	Rough Opening	NFA	Qty/Box
STVA04		4" TPO	4
STVA06		6" TPO	2
STVA 08		8" TPO	2
STVA10		10" TPO	1
STVA12		12" TPO	1
SPVA04		4" PVC	4
SPVA06		6" PVC	2
SPVA 08		8" PVC	2
SPVA10		10" PVC	1
SPVA12		12" PVC	1

*Standard size in stock

Product & Material Info.

Description	Material	Thickness
Sub Base	Galv. Steel	26 ga./".019"
Mem. Boot	TPO (Rein)	60 mil
Mem. Boot	PVC (Rein)	60 mil
Mem. Boot	EPDM (Rein)	60 mil
Top	Aluminum	24 ga./".025"